

MONTHLY MEMBERSHIP PROGRESS REPORT

LOCATION CONNECTICUT

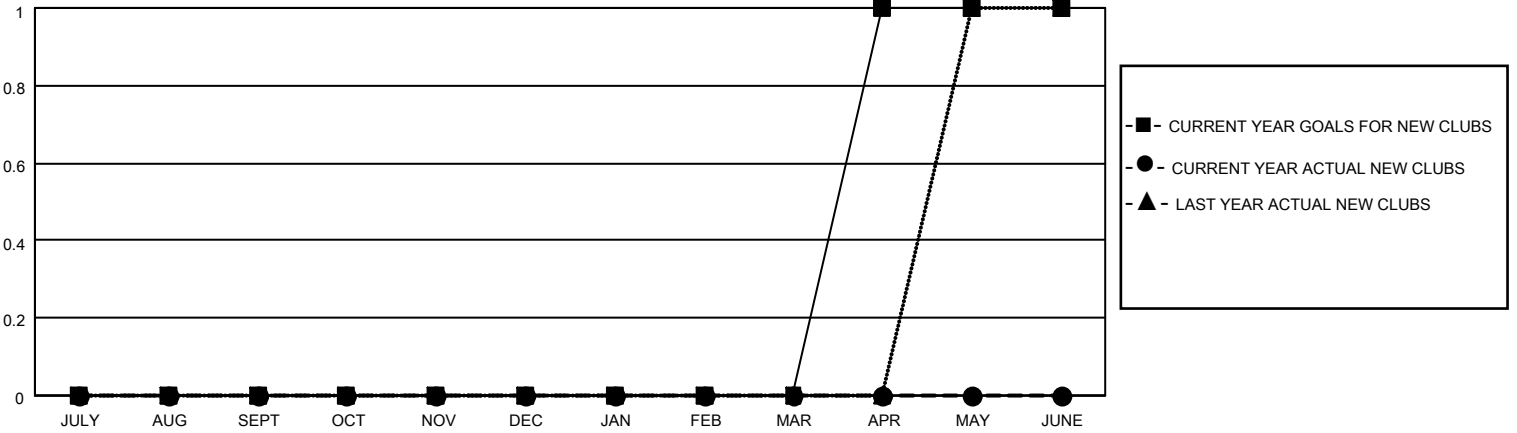
District 23 C

Results as of: 6/30/2023

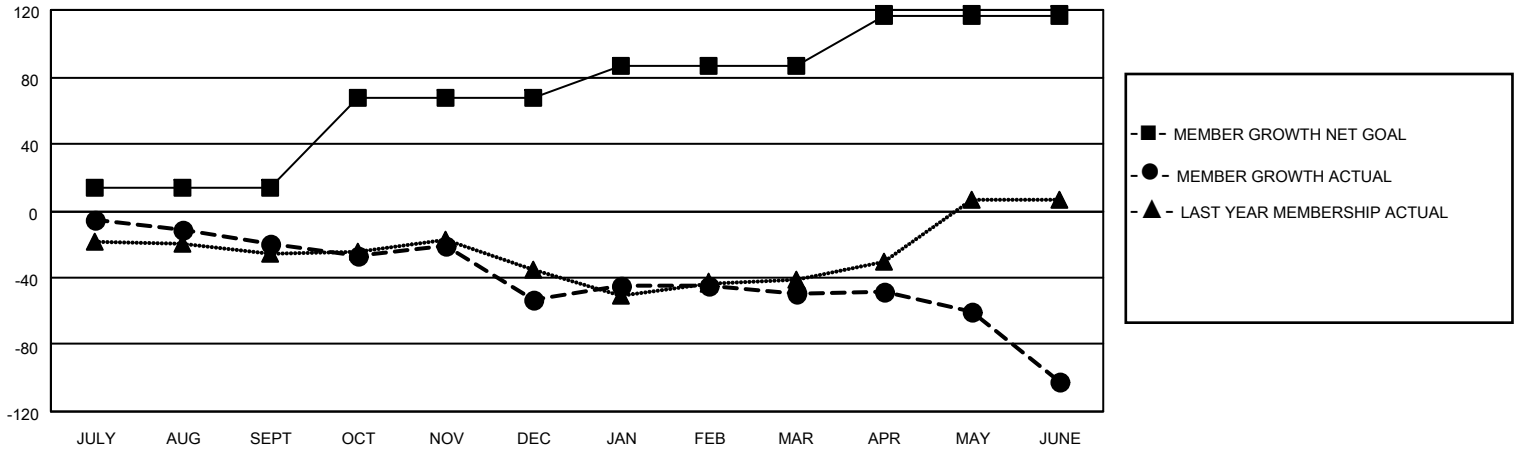
Clubs			
RESULTS FOR 2022-2023			
QUARTER	NEW CLUB GOAL	NEW CLUBS	DROPPED CLUBS
JULY/AUG/SEPT	0	0	0
OCT/NOV/DEC	0	0	1
JAN/FEB/MAR	0	0	0
APR/MAY/JUNE	1	0	1

Members			
RESULTS FOR 2022-2023			
QUARTER	MEMBER GROWTH NET GOAL	MEMBER GROWTH ACTUAL	DROPPED MEMBERS ACTUAL (including transfers)
JULY/AUG/SEPT	14	22	40
OCT/NOV/DEC	53	55	87
JAN/FEB/MAR	20	27	21
APR/MAY/JUNE	30	58	108

GOALS AND ACTUAL NEW CLUBS CUMULATIVE



GOALS AND ACTUAL MEMBERS CUMULATIVE



DROPPED CLUBS: 2

42 CLUBS OF 57 ADDED 1 OR MORE NEW MEMBERS

GENDER DISTRIBUTION

MALE	902 (59.19%)
FEMALE	622 (40.81%)
NON BINARY	0 (0.00%)
PREFER NOT TO ANSWER	0 (0.00%)

DROPPED MEMBERS

[CLICK HERE FOR CUMULATIVE MEMBERSHIP DATA](#)

DECEASED	20
CLUB CANCELLED	38
OTHER	198
TOTAL	256

TOTAL FAMILY UNIT MEMBERS	333
FAMILY MEMBERS PAYING HALF DUES	173